

THE BAYSIDE

Duplex Building

4 bedrooms
3 full, 2 half baths
2 car garage
2527 sq. ft.

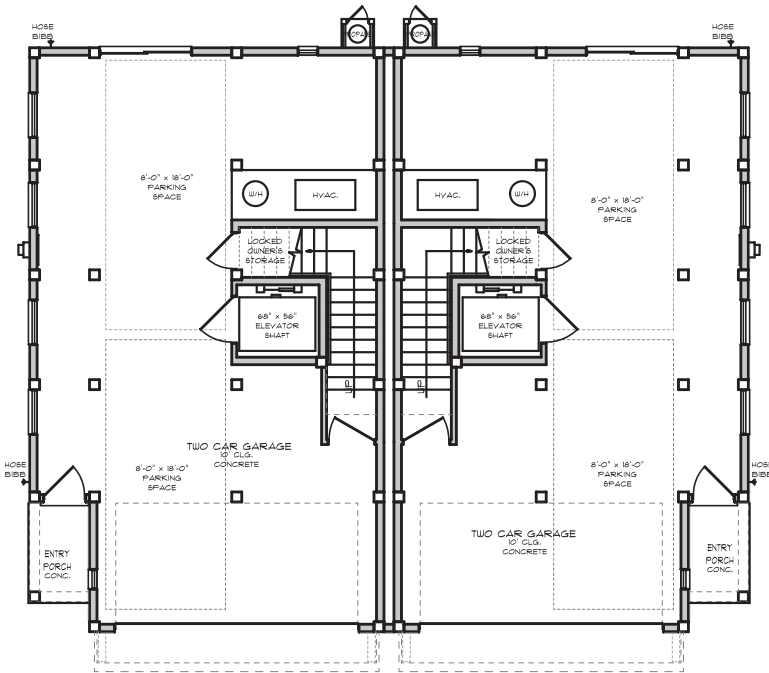


FRONT ELEVATION

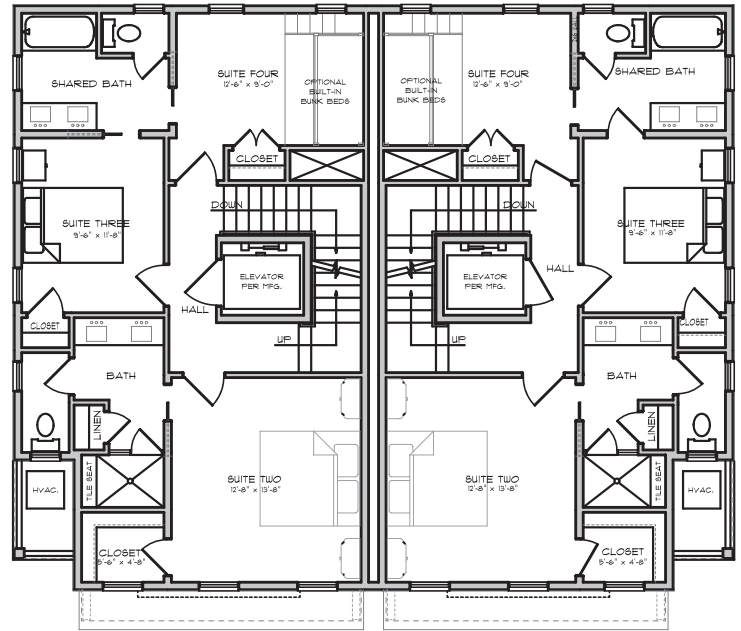
THE BAYSIDE at Osprey Point

Duplex Building

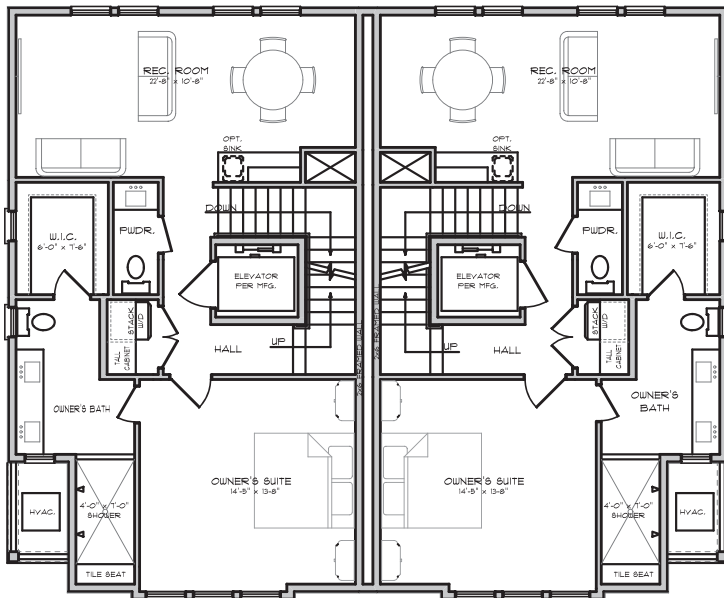
by HERRINGTON HOMES



UNIT ONE UNIT TWO
GRADE LEVEL PLAN



UNIT ONE UNIT TWO
FIRST FLOOR PLAN



UNIT ONE UNIT TWO
SECOND FLOOR PLAN



UNIT ONE UNIT TWO
THIRD FLOOR PLAN