

**THE SHORELINE**

Three Unit Building - 5D, 5E, 5F

4 bedrooms

4.5 baths

2 car garage

2670 sq. ft. - Units 1&2

2616 sq. ft. - Unit 3



UNIT ONE

UNIT TWO

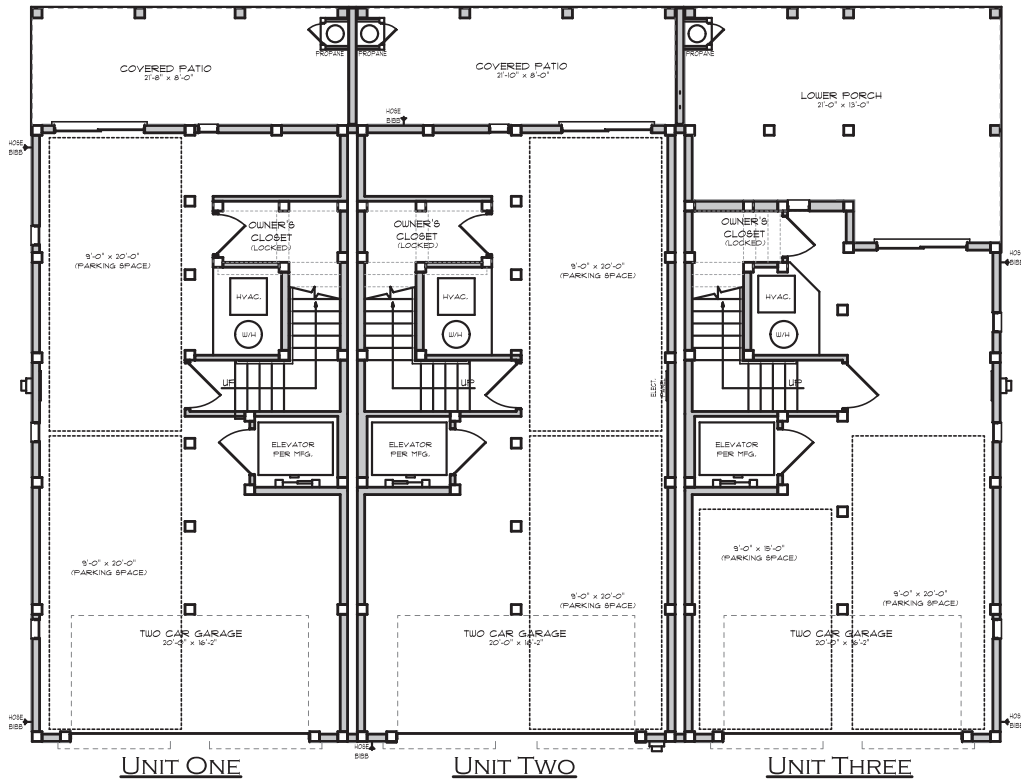
UNIT THREE

FRONT ELEVATION

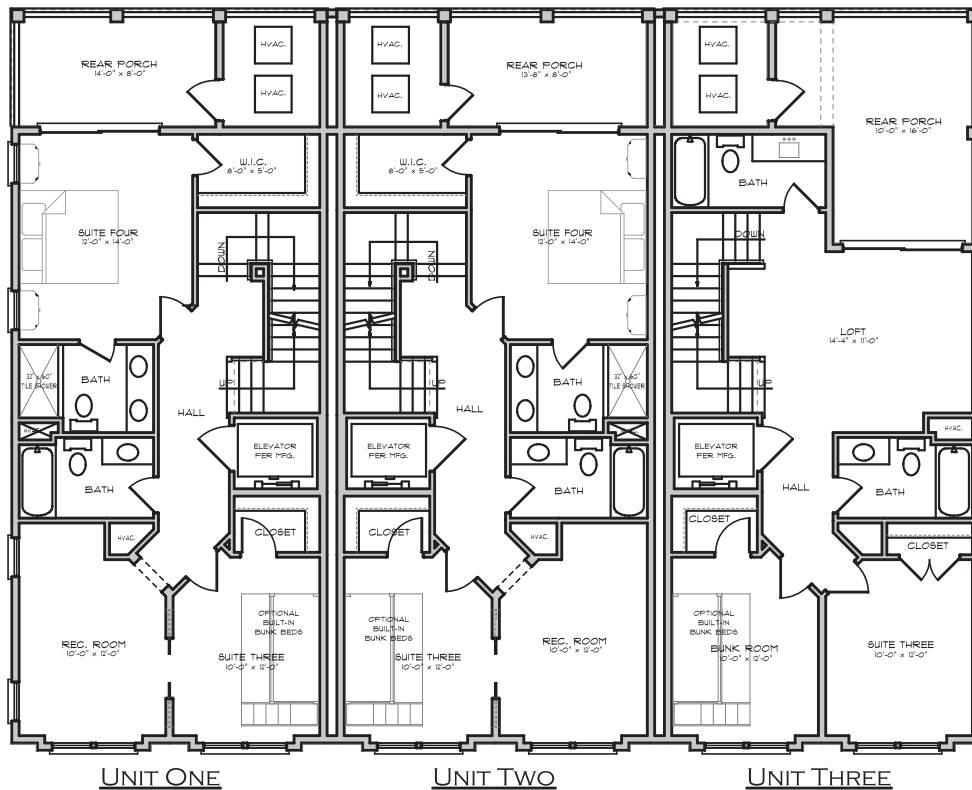
# THE SHORELINE at Osprey Point

Three Unit Building - 5D, 5E, 5F

by HERRINGTON HOMES



GRADE LEVEL PLANS



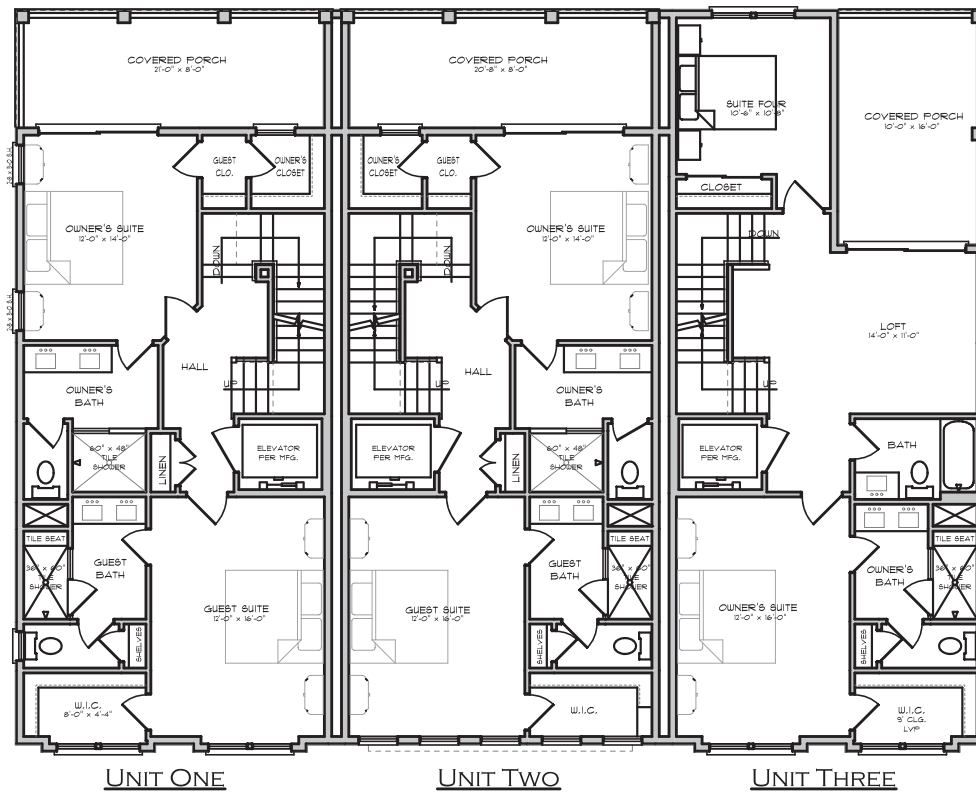
FIRST FLOOR PLAN

Plans, specifications, and prices are subject to change without notice.

# THE SHORELINE at Osprey Point

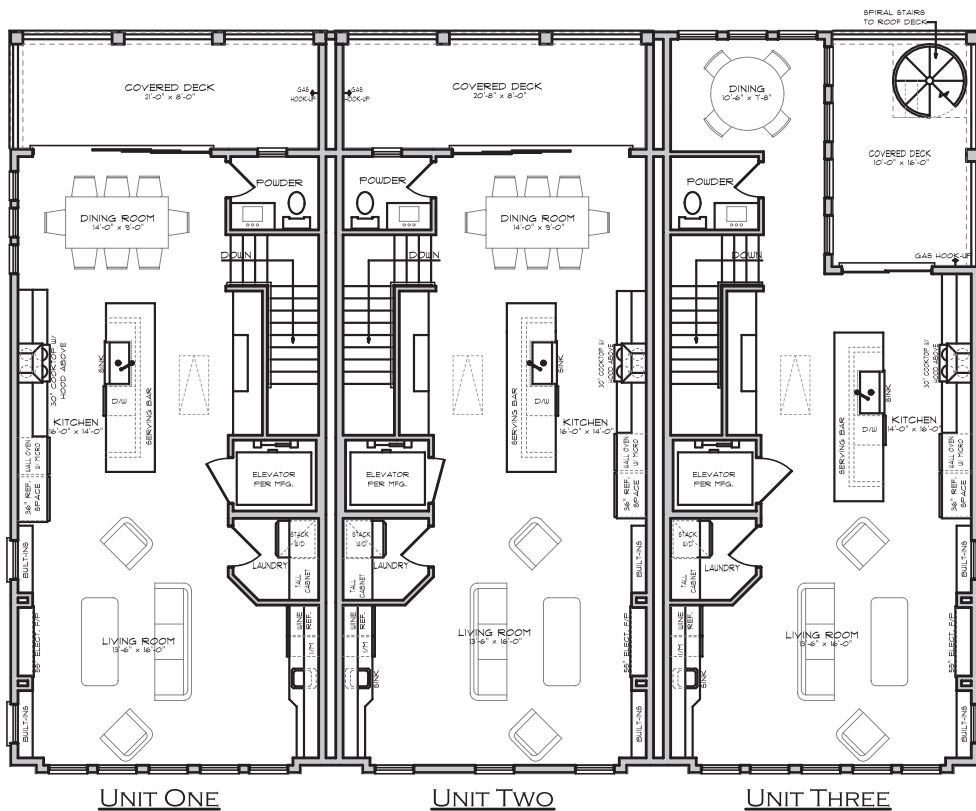
Three Unit Building - 5D, 5E, 5F

by HERRINGTON HOMES



UNIT ONE      UNIT TWO      UNIT THREE

**SECOND FLOOR PLAN**



UNIT ONE      UNIT TWO      UNIT THREE

**THIRD FLOOR PLAN**

Plans, specifications, and prices are subject to change without notice.